



August 21–28, 2021

Your guide to new student orientation and beyond.

Table of Contents

Bethany's Best Week Ever

<i>Overview</i>	3
<i>Schedule</i>	5
<i>Event Details</i>	8
New Student Checklist	4
Student Guidebook	4
Student IDs, Key Fobs / Mailbox	16
IT Services / Email Account	17
Dining at Bethany	18

Academic Resource Center / Class Schedule...	19
Spiritual Life	20
Health Services	21
Counseling Services	22
Safety and Security	23
Campus Clubs and Organizations	24
Academic Calendar / Bookstore/Spirit Store...	25
Campus Map	26
Bethany's Best Week Ever Sponsors	27

Bethany's Best Week Ever, our version of new student orientation, is a week designed around you!

Meet other new students, faculty, and staff

Learn more about Bethany and the opportunities that await

Get involved with activities and participate in events

Bethany's Best Week Ever is designed to get your college career off to a great start! Throughout the week and your time at Bethany, never hesitate to ask questions.

The following people are designated to assist you during new student orientation:

Campus Ambassadors are upperclassmen whose goal is to give you the best experience possible during new student orientation. They will be assisting with events and activities throughout Bethany's Best Week Ever.

Residential Life The Resident Hall Coordinators (RHCs) are live-in staff members who provide leadership, oversight, and direction for our residence halls. The Resident Assistants (RAs) are student leaders who also live in the halls. While they will be a great resource for your entire time at Bethany, they also can answer any questions during new student orientation.



WHERE'S THAT?

Common terminology, acronyms, and pronunciations used on campus:

Campus Green - Open grass space between the SFC and Old Main

Honsey - (HUN-zee) Hall

Lanterns - Large windowed rooms at North (towards Chapel) and South ends of Honsey Hall on upper level

OM - Old Main

SFC - Sports and Fitness Center

Teigen - (TIE-gun) Hall

The "V" - Viking Village (in Old Main)

Twit - (TWIGHT) Hall

YFAC - Ylvisaker (ILL-vih-sah-kur)
Fine Arts Center or "WHY-fack" for short

See Campus Map on page 26



STUDENT GUIDEBOOK

The Student Guidebook is designed to equip students with information about the various aspects of college life as they grow academically, socially, and spiritually. It includes information regarding college policies, guidelines, standards and responsibilities. Students are expected to be familiar and comply with its contents.

The Student Guidebook can be found online at:

blc.edu/student-guide

Consumer information can be accessed at: **blc.edu/consumer-information**. Paper copies of the above documents are available from the Office of Student Affairs.



New Student Checklist

- ☐ Complete your room check-in form and return it to your Resident Assistant (R.A.)
- ☐ Get your Viking Student I.D. card in Memorial Library
- ☐ Pick up your textbooks from the Spirit/Bookstore in Old Main

Visit the Business Office (second floor of Old Main) to:

- ☐ Pay tuition and fees at the cashier's window (right next to Business Office)
- ☐ Register your vehicle and purchase a parking pass
(forms also available online at **www.blc.edu/vehicle-registration**)
- ☐ Get connected to the Bethany Network (Internet) with your computer. If you have questions, visit IT Services in Meyer Hall, room 203
- ☐ Check your BLC email for announcements and information at **gmail.blc.edu**
- ☐ Become familiar with the Student Guidebook. (More information to the left)
- ☐ Complete CSI and Safe Colleges online training if you haven't already

Schedule

Events are open to ALL students except where noted.

● = Parents/Guardians of Students ONLY

● = First Year and Transfer Students ONLY

SATURDAY, AUGUST 21

- 9:30 a.m.–3:30 p.m. Residence Halls Open for New and Returning Student Move-In
- 9:30 a.m.–3:30 p.m. Campus Services Open
- 9 a.m.–5 p.m. Campus Book/Spirit Store Open with Textbook Pickup – Old Main, 2nd floor
- 11:30 a.m.– 3 p.m. Lunch Available – Dining Center, Old Main
- 3:30–4:30 p.m. ● Parent Orientation – Trinity Chapel
- 4:30–5:30 p.m. ● Parents Reception – Rotating Hors d’oeuvres Social, Honsey Hall
- 4–5 p.m. Roommate Agreements – Residence Hall Lounges
- 5–6:30 p.m. Dinner – Dining Center
- 7–9 p.m. Block Party featuring “The Divers” – Campus Green

SUNDAY, AUGUST 22

- 9–10 a.m. Continental Breakfast – Dining Center, Old Main
- 11:30 a.m.–1 p.m. Lunch – Dining Center
- 1–3 p.m. ● Safety and Success at Bethany – Trinity Chapel
- 3–4:30 p.m. ● Amazing Viking Race – Campus Green
- 4:30–5:30 p.m. Choir Rehearsal for Opening Service – Ylvisaker Fine Arts Center 101
- 5–6:30 p.m. Dinner – Dining Center
- 7–8 p.m. Comedy Sportz – Lee Theater, Ylvisaker Fine Arts Center
- 8–9:30 p.m. Bonfire featuring Music and Mixers – Bonfire pit corner of Division/Marsh Streets

Schedule

MONDAY, AUGUST 23

● = First Year and Transfer Students ONLY

- 7:30 a.m. Dining Center Open – Regular hours begin
- 10–11 a.m. Opening Service – Trinity Chapel
- 11 a.m.–noon ● Academic Orientation – Starts in Lee Theater, Ylvisaker Fine Arts Center
- Noon–1:30 p.m. ● New Vikings Luncheon – Younge Gym, SFC
- 2–3:30 p.m. Student Employment Information Meeting – Meyer Hall 101
- 3:30–5 p.m. Spanish or German Language Placement – Meyer Hall 109
- 4–5 p.m. PSEO Welcome and Orientation – Starts in Meyer Hall 101
- 6–8 p.m. Paddle at The Pond – Red Jacket Trail Park; transportation from Old Main circle at 6 and 6:30 p.m.
- 8:30–9:30 p.m. Living at Bethany – Location posted in Residence Halls

TUESDAY, AUGUST 24

- 8 a.m. Classes Begin
- 10–10:20 a.m. Chapel – Trinity Chapel
- 3:30 p.m. Instrumentalist Informational Meeting (band, jazz, orchestra, drumline) – YFAC 111
- 3:30 p.m. The Scroll, Yearbook, and Photojournalism Informational Meeting – Pub Hub, Honsey Hall 133
- 4 p.m. Varsity Winter and Spring Sports Meeting – Meyer Hall 101
- 4:30 p.m. Choir, Mary Martha, and Handbell Informational Meeting – Ylvisaker Fine Arts Center 101
- 6–8 p.m. Craft Night with Live Music by Blue River Combo – Campus Green
- 6:30–7:30 p.m. Student Appreciation Culver's Sundaes – Campus Green
- 7 p.m. Theatre Informational Meeting – Lee Theater, Ylvisaker Fine Arts Center

Schedule

WEDNESDAY, AUGUST 25

- 8 a.m. **Classes**
- 10 a.m. **Chapel** – Trinity Chapel
- 3–5:30 & 6–6:30 p.m. **Auditions for Choir and Mary Martha Singers** – Ylvisaker Fine Arts Center 101
- 4:30 p.m. **Speech Team Meeting** – Honsey Hall 211
- 5:30 p.m. **Vespers** – Trinity Chapel
- 6 p.m. **Fall Theatre Auditions** – Lee Theater, Ylvisaker Fine Arts Center
- 6–9 p.m. **WOW Zone** – Transportation from Old Main circle at 6 and 6:30 p.m.

THURSDAY, AUGUST 26

- 8 a.m. **Classes**
- 10 a.m. **Chapel** – Trinity Chapel
- 6–7:30 p.m. **Kickball** – Softball Field (on Browns Court, near Gullixson Hall)

FRIDAY, AUGUST 27

- 8 a.m. **Classes**
- 10 a.m./10:20 a.m. **Chapel and All-Campus Photo** – Trinity Chapel/Campus Green
- 9 p.m. **Movie on the Green** – Campus Green

SATURDAY, AUGUST 28

- 1–4 p.m. **Swimming and Stuff at Spring Lake Park** – 641 Webster Ave, North Mankato

SATURDAY, AUGUST 21

Residence Halls Open for New and Returning Student Move-In

Saturday, 9:30 a.m.–3:30 p.m.

Welcome to your new home! Residence halls will be open for new and returning students to move in during this time. Simply report to your assigned residence hall and check in with residential life staff.

Campus Services Open

9:30 a.m.–3:30 p.m.

Campus services including the Memorial Library, Information Technology (IT) Services, Financial Aid, and the Business Office will be open and available to lend assistance and answer questions.

Campus Book/Spirit Store Open with Textbook Pickup

9 a.m.–5 p.m., Old Main, 2nd Floor

Pick up some great Bethany gear as well as textbooks ordered through Bethany's Partnership with eCampus.

Lunch Available

11:30 a.m.–3 p.m., Dining Center, Old Main

All are invited to lunch in the Dining Center. Students may use their meal plan and guests eat for \$7.50 each.

● Parent Orientation

3:30–4:30 p.m., Lee Theater, Ylvisaker Fine Arts Center

Be welcomed by President Gene Pfeifer and receive pertinent information from Dr. Jason Lowrey, V.P. of Academic Affairs, and Dr. Ted Manthe, V.P. of Student Affairs. The session will conclude with a student panel, which will provide an opportunity for parents to ask questions and hear answers from current students' perspective.

● Parents Reception

4:30–5:30 p.m., Rotating Hors d'oeuvres Social, Honsey Hall

You are our honored guests! Rotate through various hors d'oeuvres stations and mingle with other parents. This is also a great opportunity to visit with BLC faculty and staff who will be present to meet and greet you. Complimentary food and drink are provided from local Mankato restaurants.

● = Parents/Guardians ONLY

Roommate Agreements

4–5 p.m., Residence Hall Lounges

Get to know your roommate(s) and make a plan for successfully sharing a space!

Dinner

5–6:30 p.m., Dining Center

Students may use their meal plan and guests eat for \$8 each.

Block Party featuring The Divers

7–9 p.m., Campus Green

Head to the campus green for food and games including bag toss and nine square plus the eclectic acoustic sound of The Divers! With a penchant for fun and getting the audience involved in the show, The Divers have been entertaining audiences in Southern Minnesota for years. Bring your blanket or chair.

SUNDAY, AUGUST 22

Continental Breakfast

9–10 a.m., Dining Center

Grab a quick bite before heading to church.

Lunch

11:30 a.m.–1 p.m., Dining Center

All are invited to lunch in the Dining Center. Students may use their meal plan and guests eat for \$7.50 each.

● Safety and Success at Bethany

1–3 p.m., Lee Theater, Ylvisaker Fine Arts Center

Students will learn about risk factors inherent in the college experience and how to make smart decisions. They will also learn about the Support System in place for them at Bethany including resources such as Mayo Express Care, the Academic Resource Center, and counseling from the Campus Chaplain and Christian Family Solutions. The code of conduct will also be addressed. This event is for new and transfer students.

Attendance is required.

● = First Year and Transfer Students ONLY

● Amazing Viking Race

3–4:30 p.m., Campus Green

Teams of students will embark on a trek around campus. At each destination, the team must complete a challenge in order to learn the location of their next challenge. Prizes will be awarded!

Choir Rehearsal for Opening Service

4:30 p.m., Ylvisaker Fine Arts Center 101

Every singer on campus is welcome to join us for this rehearsal and for singing for the opening service.

Dinner

5–6:30 p.m., Dining Center

All are invited to dinner in the Dining Center. Students may use their meal plan and guests eat for \$8 each.

Comedy Sportz

7–8 p.m., Lee Theater, Ylvisaker Fine Arts Center

Get ready to be part of the action with hilarious comedy entertainment from the improv troupe Comedy Sportz.

Bonfire with Music and Mixers

8–9:30 p.m., Fire Pit by Soccer Field

Meet new people and catch up with old friends around the fire. S'mores, music, and mixers amp up the fun!

MONDAY, AUGUST 23

Dining Center Open

7:30 a.m., Old Main

Pioneer College Caterers, the campus food service provider, is now operating with its regular hours for the academic year. See page 18 for the full schedule.

Opening Service

10 a.m., Trinity Chapel

This worship service officially opens the academic year and features the Concert Choir and remarks by the College Chaplain, College President, and Student Body President.

Attendance is required.

● = First Year and Transfer Students ONLY

● Academic Orientation

11 a.m., Starts in Lee Theater, Ylvisaker Fine Arts Center

Meet your academic advisors, the V.P. of Academic Affairs, the Registrar, the Academic Success Coordinator, and learn everything you need to know about academics at Bethany. This event is for new and transfer students. *Attendance is required.*

● New Vikings Luncheon

12 p.m., Ron Younge Gym, Sports and Fitness Center

Enjoy a pizza luncheon with your new classmates and your advisor! There will be remarks shared from alumni about their “Bethany Experience,” and you can learn about the benefits of being an alumnus/a of our special College. Event sponsored by the Bethany Alumni Association. *Attendance is required.*

Student Employment Information Meeting

2 p.m., Meyer Hall 101

Interested in working on campus? New and returning students who have not worked for Bethany in the past should come to this meeting to learn more about student employment. Please bring proper identification to complete an I-9 Employment Verification Form (e.g. driver’s license, social security card).

Spanish or German Assessment

3:30–5 p.m., Meyer Hall 109

Students who have taken two or more years of a language in high school need to take a language assessment to determine how one’s skills correspond with a Bethany course level. The language graduation requirement can be met through placement. Students can learn how to earn additional credit for a level they have placed out of. For other languages or questions, contact John.Gunderson@blc.edu or 507-344-7543.

PSEO Welcome and Orientation

4–5 p.m., Starts in Meyer Hall 101

This welcome and orientation is designed specifically for on-campus Post Secondary Enrollment Option (PSEO) students. Meet with admissions representatives and your PSEO advisor, have your questions answered, and take a campus tour with your class schedule.

Paddle at the Pond

6–8 p.m., transportation leaves from Old Main circle

Cruise the lake in a kayak or paddle board or just take a swim! Alternatively, you can hike around the lake or check out the Le Sueur River from the Red Jacket Trestle, an old railroad bridge more than 50 feet over the river, across the street from the lake. The Red Jacket Trail Park is at 19950 Old Hwy 66, Mankato. There will be transportation leaving at 6 p.m. and 6:30 p.m. and returning at 7:30 p.m. and 8:00 p.m.

Living at Bethany

8:30–9:30 p.m., Location posted in Residence Halls

Students will meet in their residence halls with their Resident Assistants (RAs) and Resident Hall Coordinators (RHCs) to get to know one another, receive important information, and learn about living in a community. Specific meeting locations are posted in the residence halls. *Attendance is required for residential students.*

TUESDAY, AUGUST 24

Classes Begin, 8 a.m.

Instrumentalist Informational Meeting (band, jazz, orchestra, drumline)

3:30 p.m., Ylvisaker Fine Arts Center 111

Stop by to meet Professor Ben Faugstad and learn about the many instrumental performance possibilities for concert band, jazz ensemble, chamber orchestra, and drumline. All musicians are invited and even those with no prior instrumental experience are welcome!

The Scroll, Yearbook, and Photojournalism Informational Meeting

3:30 p.m., The Pub Hub, Honsey Hall 133

Interested in becoming involved with a fun campus organization that can also help build your resume? Join us for this brief meeting to learn about what it takes to photograph campus events or work for your student newspaper or yearbook.

Varsity Winter and Spring Sports Meeting

4 p.m., Meyer Hall 101

Do you plan on participating in a winter or spring sport? If so, attend this meeting to complete NCAA paperwork and meet with coaches. *Attendance is required for varsity athletes participating in a winter or spring sport.*

Choir, Mary Martha, and Handbell Informational Meeting

4:30 p.m., Ylvisaker Fine Arts Center 101

Interested in singing in the Concert Choir or Mary Martha Singers, or playing with the Handbell Choir? If so, we look forward to meeting you! Stop by to learn more about auditions and rehearsals.

Craft Night with Live Music from Blue River Combo

6–8 p.m., Campus Green

Get inspired by the lively music of the Blue River Combo to make cool stuff, including tie-dye t-shirts, to wear or decorate your room.

Student Appreciation “Make your own” Sundaes with Culver’s Frozen Custard

6:30–7:30 p.m., Campus Green

All Bethany students are welcome to stop out on the campus green to enjoy a cold treat as a “Thank you!” for choosing Bethany. This event is sponsored by the Bethany Alumni Association.

Theatre Informational Meeting

7 p.m., Lee Theater, Ylvisaker Fine Arts Center

Interested in any aspect of theatre? Even if you’ve never been involved in a play before, we’d love to meet you. Come to the Sigurd K. Lee Theater to find out all about classes, productions, auditions, and opportunities that await you this year.

WEDNESDAY, AUGUST 25

Classes, 8 a.m.

Auditions for Choir and Mary Martha Singers

3–5:30 and 6–6:30 p.m., Ylvisaker Fine Arts Center 101

Speech Team Meeting

4:30 p.m., Honsey Hall 211

Introduction to Bethany's award-winning Speech and Debate Team. The team competes in 20 tournaments a year in a variety of speaking events. Learn what you can do on the team!

Vespers, 5:30 p.m., Trinity Chapel

WOW Zone

6–9 p.m., Located at 2030 Adams St., Mankato

Unlimited free laser tag, bowling, and mini golf. Just present your Bethany ID at the counter. There will be transportation leaving at 6 p.m. and 6:30 p.m. and returning at 8:30 p.m. and 9:00 p.m.

Fall Theatre Auditions

6 p.m., Lee Theater, Ylvisaker Fine Arts Center

THURSDAY, AUGUST 26

Classes, 8 a.m.

Kickball

6–7:30 p.m., Softball Field

Come on out for a friendly game of kickball. It's a great opportunity to meet people even if your kickball skills aren't great.

FRIDAY, AUGUST 27

Classes, 8 a.m.

All-Campus Photo after Chapel

Friday, 10 a.m., Trinity Chapel / Campus Green

After the morning chapel service, meet out on the Campus Green for Bethany's traditional all-campus photo. Bring your smile!

Movie Under the Stars

9 p.m., Campus Green

Bring your blanket or chair, grab free snacks and drinks, and enjoy a movie under the stars on the big screen.

SATURDAY, AUGUST 28

Swimming and Other Fun Stuff at Spring Lake Park

1-4pm, 641 Webster Ave., North Mankato

Swim for free at the recently renovated Spring Lake Park Pool, which boasts two water slides, a zip line, a climbing wall, and two diving platforms. Besides swimming, there are numerous sand volleyball courts, a basketball court, concession stand, and a lake with a pier from which you can fish (bring your own poles) encircled by a walking path.



YOU'VE GOT MAIL

Whether living on campus or off, you will be assigned a mailbox for weekday delivery of letter mail, school announcements, and package notifications.

If you live on campus, your room key will open your mailbox. If you commute, pick up a mailbox key at the business office.

Your mailing address will be:

Your Name
700 Luther Drive
Mankato, MN 56001

There is no need to use your room number or mailbox number as it changes each year.

Make It Official

VIKING STUDENT I.D. - *Issued in Memorial Library*

All Bethany students are issued a bar-coded picture Viking Student ID card. The Viking Student ID card is used for entry into the Dining Center, cashing checks, checking out library books, course registration, and attending events on campus.



KEY FOBBS

All students, residential or commuter, will need to have a key fob to access buildings on campus. Residential students will receive a key fob when they move into the residence halls. Commuting students should pick up their fobs in the Memorial Library.

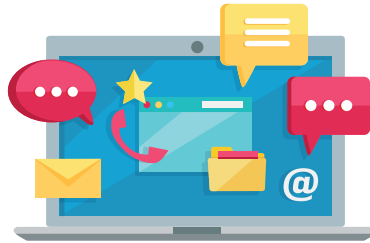
Need Tech Help?

The Information Technology (IT) Office operates a Help Desk for all technology inquiries (computer, network, TV, phone, web, etc.):

To contact the BLC Help Desk:

- Submit your request at **blc.edu/helpdesk**
- Call **507-344-7411**
- Visit the IT office in **Meyer Hall 203**

More information can be accessed at **blc.edu/it-services**. Service is provided for **current BLC students and staff only**.



LOG-IN INFORMATION

Use the BLC user ID and password you were sent over the summer to log-in and check your email account frequently. Bethany uses email as the main form of communication to students.

- Access your account here:
gmail.blc.edu

If you do not have your BLC log-in information, please go to the Information Technology Office in Meyer Hall room 203.



Meal Plans

Residential students in standard and private rooms are subscribed to the Unlimited Meal Plan. This plan gives students continuous access to the Dining Center during the hours of operation meaning you can come and go as often as you like on any given day. Commuter students may request a meal plan such as the Five Meal Per Week plan or the Unlimited Meal Plan or choose to place “flex” dollars on their student ID card to pay as they go.

Let’s Eat!

Dining and visiting with friends is an important part of college life.

The Dining Center has food available all-day, every weekday, from 7:30 a.m. until 10:30 p.m. (weekend hours are slightly different). Traditional meal times include expansive menu selections, while lighter menu items continue to be available between meals. Made-to-order grill options remain available into the late night hours. Please let us know if you have dietary restrictions.

More information on Dining Services can be found at: blc.edu/dining-services

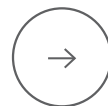
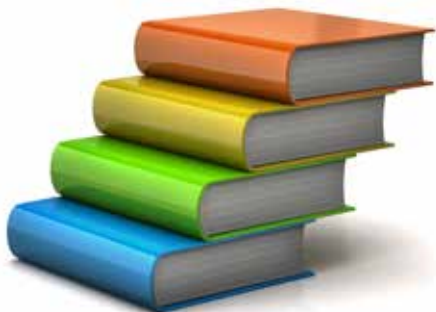
MEAL	Mon.–Thurs.	Friday	Saturday	Sunday
Hot Breakfast	7:30–9:15 a.m.			9:15–10:15 a.m.
Continental Breakfast	9:15–11 a.m.			
Brunch			11:30 a.m.–12:30 p.m.	
Full Lunch	11 a.m.–1:30 p.m.			12–1 p.m.
Light Lunch	1:30–5:15 p.m.			
Dinner	5:15–7:15 p.m.	5:30–6:30 p.m.		
Late Night	7:15–10:30 p.m.		6:30–10:30 p.m.	

Academic Resource Center

The Academic Resource Center (ARC) at Bethany Lutheran College is a mentoring and counseling program designed to help ensure your academic success. Our personalized approach provides academic support for students through advising, study sessions, tutoring services, and writing coaching provided by our own Writing Center. We also provide appropriate accommodations for students with identified disabilities through the creation and implementation of Academic Resource Plans.

If you would like to learn more or have questions regarding the Academic Resource Center please send them to academicresources@blc.edu.

Watch for announcements regarding specific hours of operation during the school year.



WHERE DO I GET MY SCHEDULE?

1. Log in to your account on any computer at my.blc.edu.
2. Go to the **Student** tab at the top of the page, then choose **Class Schedule and Text Books** on the left, and click **Search**.
3. Scroll to the bottom of your schedule and click on **Print Schedule**. You'll see your schedule as a PDF; go to **File** on the menu above, and **Print**.



Spiritual Life

Bethany Lutheran College is a community of faith and learning and we emphasize spiritual development together with your academic studies. Bethany faculty focus on your spiritual well being as well as your academic pursuits. At Bethany, the Christian faith is integrated into our campus in many ways for you to learn about and strengthen your faith.

- Daily chapel at 10 a.m. Monday-Friday
- Midweek Vespers at 5:30 p.m. on Wednesdays
- Weekly Bible studies
- In Depth speaker series
- Spiritual counseling

Health and Wellness

MAYO CLINIC HEALTH SYSTEM – EXPRESS CARE CLINIC

All students have access to an on-campus Express Care Clinic operated by Mayo Clinic Health System on the first floor of Luther Hall, adjacent to Old Main. There is no charge for student visits to the Express Care Clinic as student fees cover the costs. Students simply need to provide their current Bethany student I.D. card to receive medical services.

The Express Care Clinic is staffed with board-certified Physician's Assistants or Nurse Practitioners from the Mayo Clinic Health System. These practitioners are able to diagnose and prescribe medications for common conditions such as: strep throat, pinkeye, sinus infections, respiratory illnesses, skin infections, and the like.

The clinic is open every weekday morning from 7:45 – 9:45 a.m. while classes are in session.

More information can be found at blc.edu/health-services.





Need To Talk?

SPIRITUAL COUNSELING

The campus Chaplain is available for students seeking spiritual guidance.



Chaplain Don Moldstad, Director of Campus Spiritual Life
Office: Lower level of Trinity Chapel, room III
507-344-7312 | Don.Moldstad@blc.edu

PERSONAL COUNSELING

Bethany offers personal counseling to students through Christian Family Solutions. Their licensed counselors can assist students in navigating the emotional and behavioral challenges of college life. The counseling center is located in **Luther Hall 207** and an appointment can be requested by calling **800.438.1772**.

More information can be found at blc.edu/counseling-services

Safety and Security

Bethany Campus Security Services exists for the protection and safety of persons and property on the campus. Our security officers provide regular patrols of buildings and grounds, perform daily security checks, and when appropriate issue security alerts.

Every member of Bethany's campus community contributes toward a safe campus and bears responsibility to report crimes or suspicious activity and maintain a safe environment. To report a crime or an emergency on campus, contact:

- Emergency: **dial 911**
- Campus Security Services: **507.344.7888**

Topics for students including: standards of conduct, weapons, sexual misconduct, alcohol and drug policies can be found at **blc.edu/student-guide**.

Visit the security web page at **blc.edu/security** for a full list of services provided and for access to the Annual Security and Fire Safety Report.





THERE'S A CLUB FOR YOU

Here's a sample of the many clubs
you can join on campus:

- Bethany Business Club
- Bethany Organization of
Student Scientists
- Cross Terrain Sports Club
- Psych Club
- Scholastic Leadership Society
- Student Athlete Advisory Committee
- Student Senate
- World Club

For more information, visit:
blc.edu/clubs-and-organizations

Getting Involved

CAMPUS CLUBS AND ORGANIZATIONS

Bethany has about twenty-five different clubs and organizations for students. Throughout the first week of classes, different clubs and organizations will be set up outside the Dining Center where you will be able to visit with group leaders and find out more information about each club and organization.

The Bethany Activities Committee (BAC) organizes many of the campus-wide student activities that occur during the year, including Bethany's Best Week Ever. BAC will update information about upcoming events on their Facebook page as well as the BLC website calendar and at blc.edu/student-activities.



Academic Calendar

Online: blc.edu/academic-calendar

Aug. 23	Bethany Opening Service	Jan. 10	Spring Semester Classes Begin
Aug. 24	Fall Semester Classes Begin	Jan. 14	Last day to add/drop a class
Aug. 30	Last day to add/drop a class	Jan. 17	Martin Luther King Jr. Day
Sept. 6	Labor Day	Feb. 21	Presidents' Day
Oct. 11–13	Mid Term Exams	Feb. 28–Mar. 3	Mid Term Exams
Oct. 14, 15	Mid Term Break	Mar. 4–11	Spring Break
Oct. 18	Classes Resume	Mar. 14	Classes Resume
Oct. 20	Advising Day	Mar. 15	Advising Day
Oct. 22	Last day to drop with a "W"	Mar. 18	Last day to drop with a "W"
Nov. 5	Last day to drop with a "WP/WF"	April 1	Last day to drop with a "WP/WF"
Nov. 25, 26	Thanksgiving Break	April 14–18	Easter Break
Nov. 29	Classes Resume	April 19	Classes Resume
Dec. 10	Fall Commencement	May 9–12	Final Exams
Dec. 13–16	Final Exams	May 12	Commencement Vespers
Dec. 17	Christmas Break Begins	May 13	Spring Commencement



BETHANY BOOKSTORE /SPIRIT STORE

The Bethany Bookstore/Spirit Store partners with **eCampus** for all college textbook sales. Sign in to **MyBLC** and view your class schedule to see your personalized textbook list.

Visit the Bookstore/Spirit Store in Old Main for :

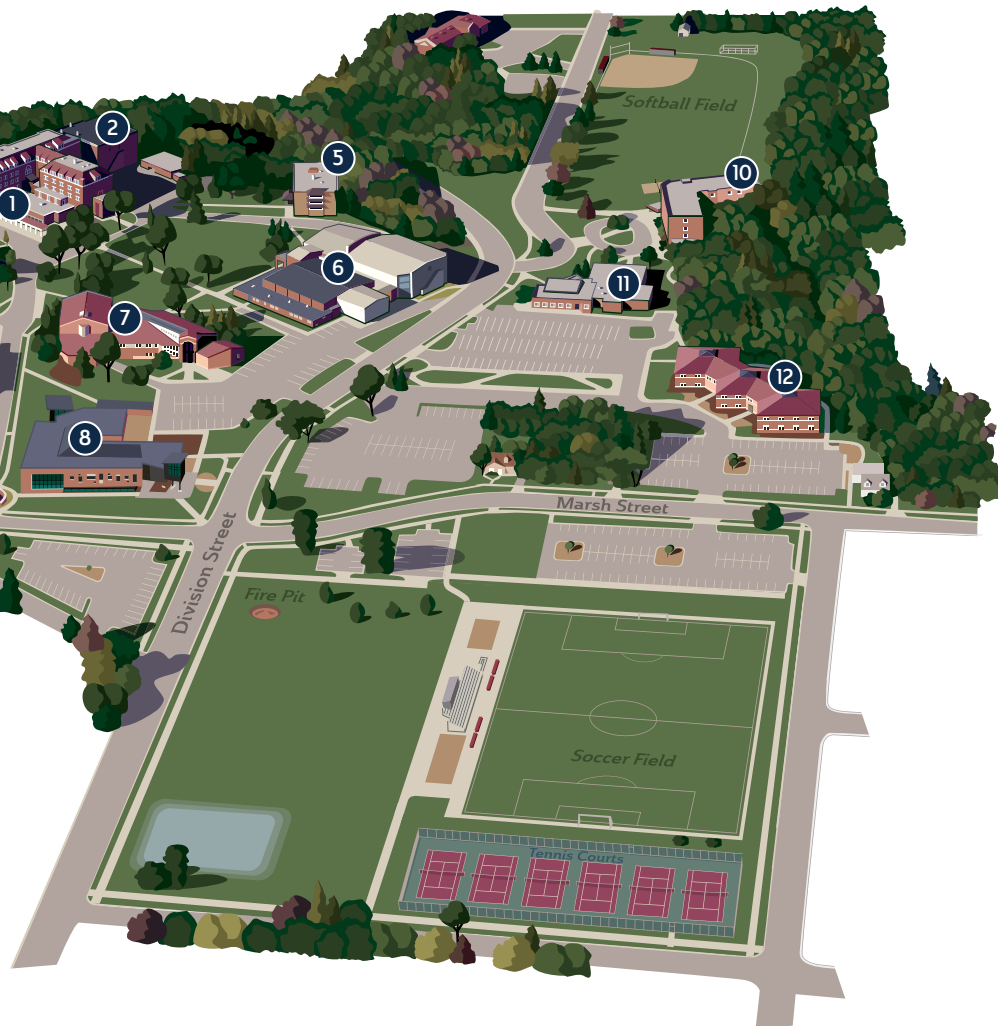
- School/office supplies, Christian reading materials, and greeting cards
- A complete line of official college clothing and accessories
- Coffee Corner
- Stamps, postage, mailing packages

Bookstore Hours:

Mon.–Fri. 10:30 a.m.–3:30 p.m.

Campus Map

1. Old Main / Anderson Hall
2. Luther Hall
3. Memorial Library
4. Trinity Chapel
5. Teigen Hall
6. Sports and Fitness Center
7. Ylvisaker Fine Arts Center
8. Honsey Hall
9. Meyer Hall
10. Gullixson Hall
11. Tweit Hall
12. Edgewood Place



Thank you to our sponsors

Thank you to these local
restaurant sponsors for their
generous contributions
in making the Parent's
Reception and Best
Week Ever possible.





COUNTRY

INN & SUITES®

BY RADISSON

HOTEL & CONFERENCE CENTER

(507) 388-8555
countryinns.com/mankatomn